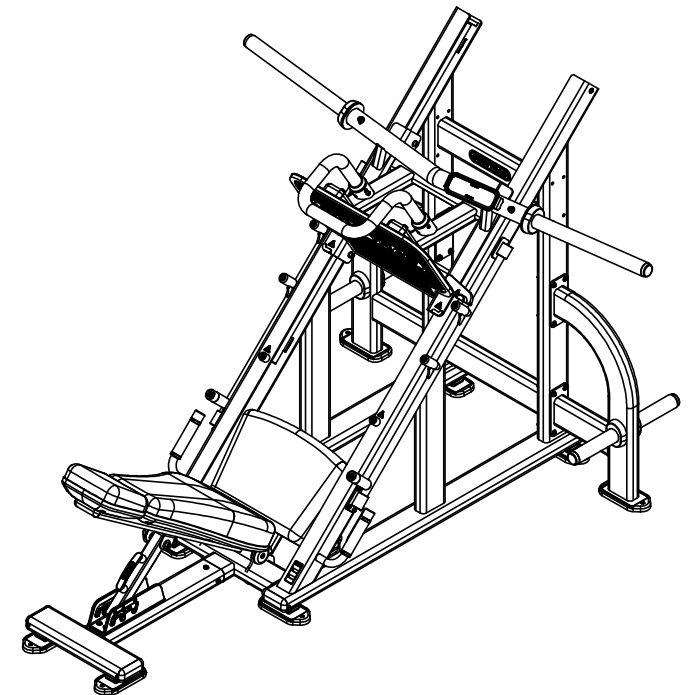
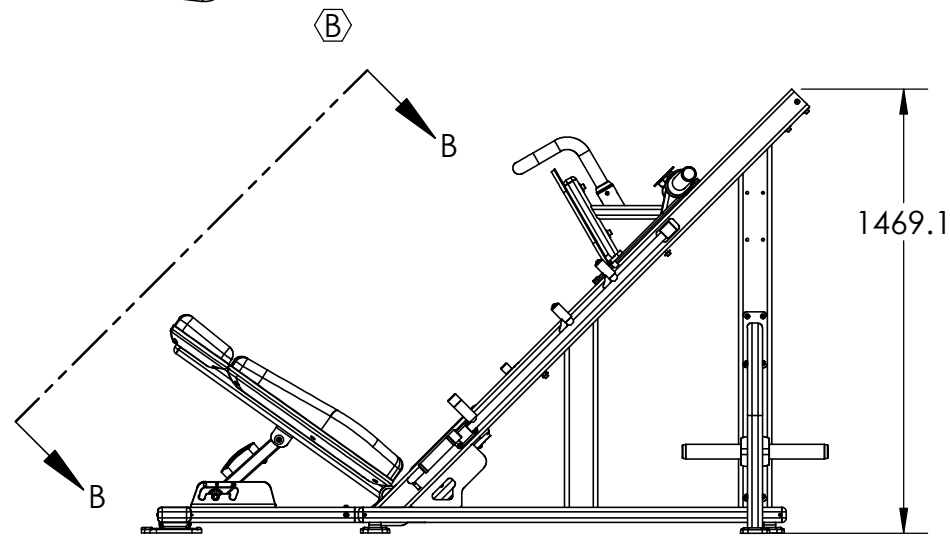
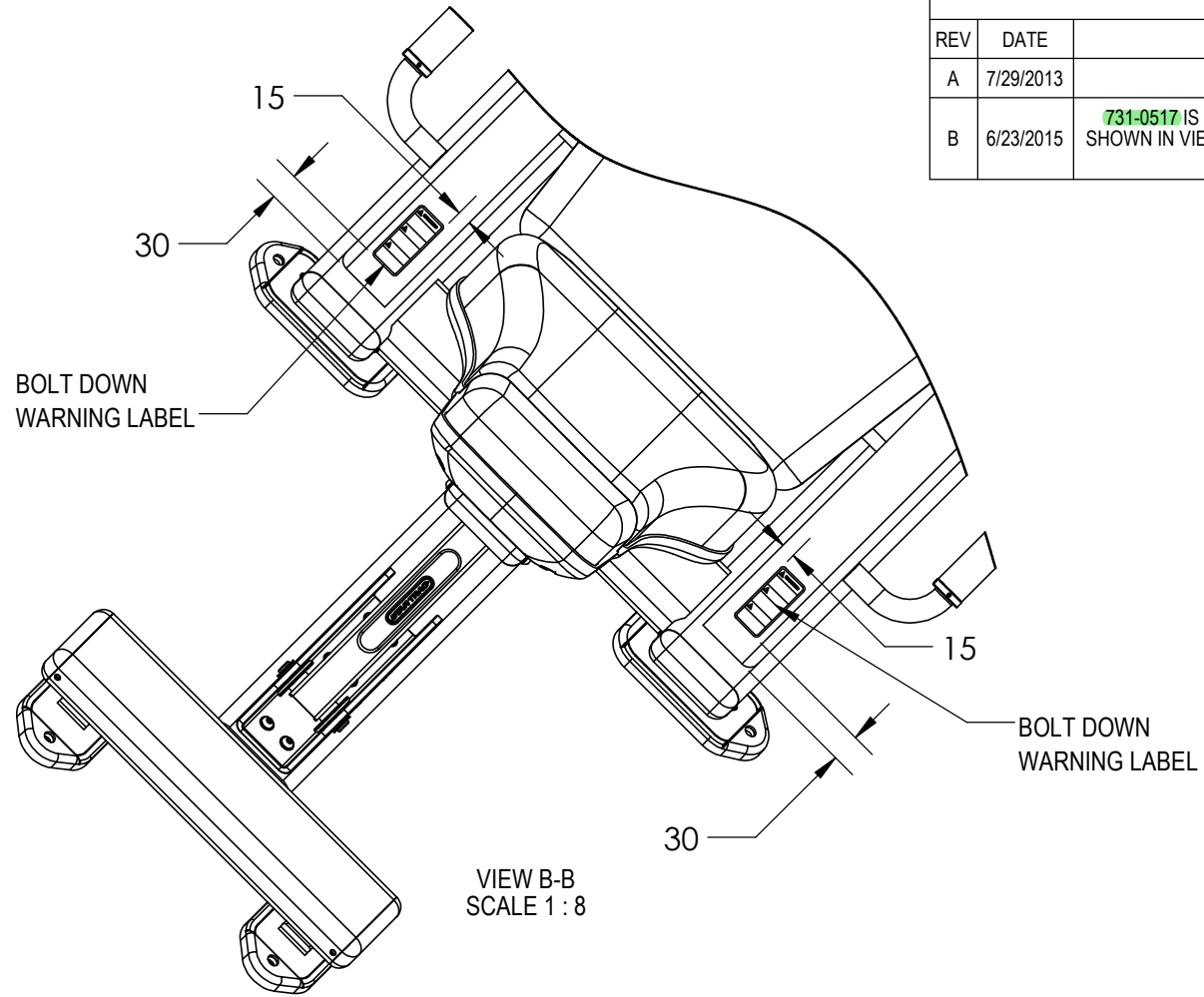
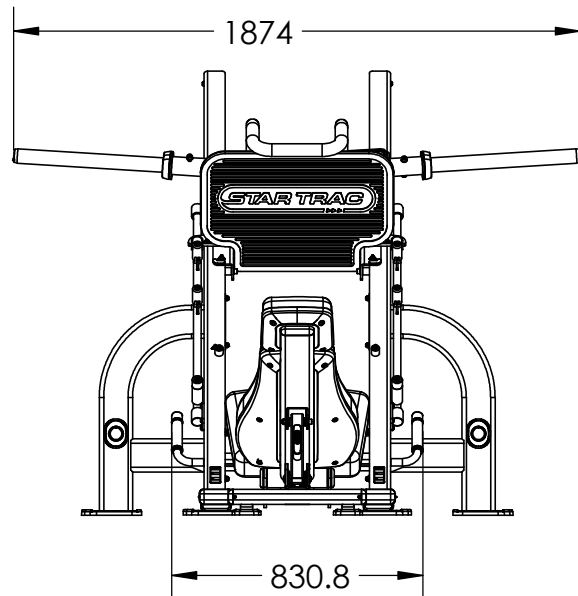
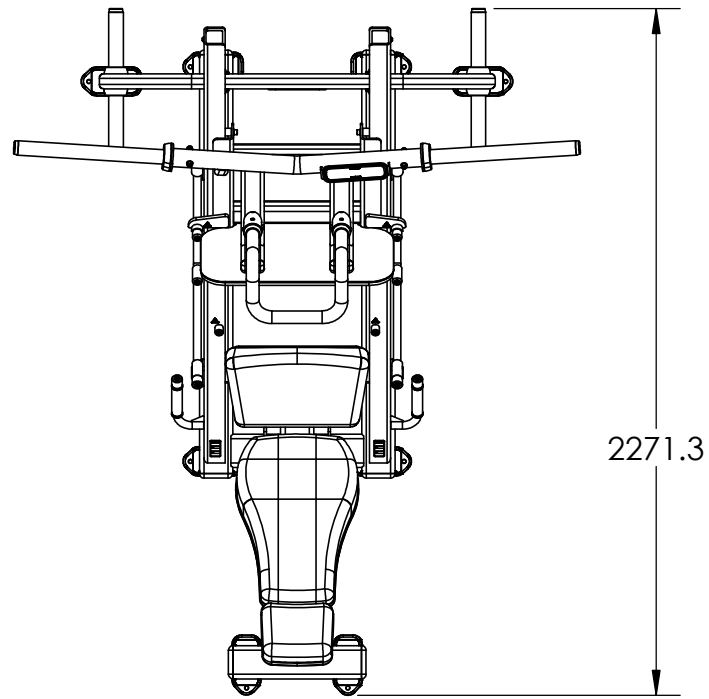


NOTES:



REVISION HISTORY				
REV	DATE	DESCRIPTION	ECO	BY
A	7/29/2013	RELEASE DRAWINGS FOR SPARE PARTS	14281	CLK
B	6/23/2015	731-0517 IS (QTY: 2); (WAS QTY: 1) & RELOCATED AFFIXED POSITION AS SHOWN IN VIEWING PLANE "B-B". CHANGED DRAWING TEMPLATE TO CORE HEALTH & FIT.	15025	JO

DOCUMENT STATUS:

NOTICE OF PROPRIETARY INFORMATION
THIS DOCUMENT SHALL NOT BE REPRODUCED NOR SHALL THE INFORMATION CONTAINED HEREIN BE USED BY OR DISCLOSED TO OTHER EXCEPT AS EXPRESSLY AUTHORIZED BY CORE HEALTH & FITNESS, LLC.

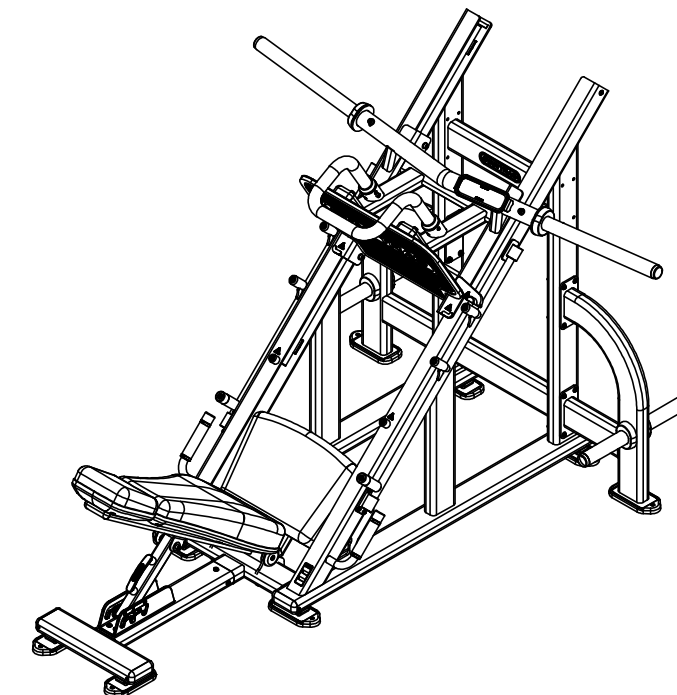
CLASS OF WORK	UNLESS OTHERWISE SPECIFIED DIMS ARE IN mm. TOLERANCES FOR MEASURE OF LENGTH ARE:							ANGLES = ±2°
	0.5 to 3	>3 to 6	>6 to 30	>30 to 120	>120 to 400	>400 to 1000	>1000 to 2000	
FINE	±0.05	±0.05	±0.1	±0.15	±0.2	±0.3	±0.5	----
MEDIUM X	±0.1	±0.1	±0.2	±0.3	±0.5	±0.8	±1.2	±2
COARSE	±0.2	±0.3	±0.5	±0.8	±1.2	±2	±3	±4
VERY COARSE	----	±0.5	±1	±1.5	±2.5	±4	±6	±8

MATERIAL SEE BOM	FINISH N/A	VENDOR: N/A	P/N: N/A
----------------------------	----------------------	--------------------	-----------------

THIRD ANGLE PROJECTION		
DRAWN	INITIAL CLK	DATE 7/25/2013
CHECKED		
APPROVED		
	U.O.M.	MM

CORE HEALTH & FITNESS, LLC 4400 NE 77th Ave., Suite 300 Vancouver, WA 98662		
CORE PART NO	REV	
IP-L1140-XXXXS	B	
TITLE IP,LEV,ANGLED LEG PRESS		
SCALE: 1:25	SHEET 1 OF 6	SHEET SIZE: B

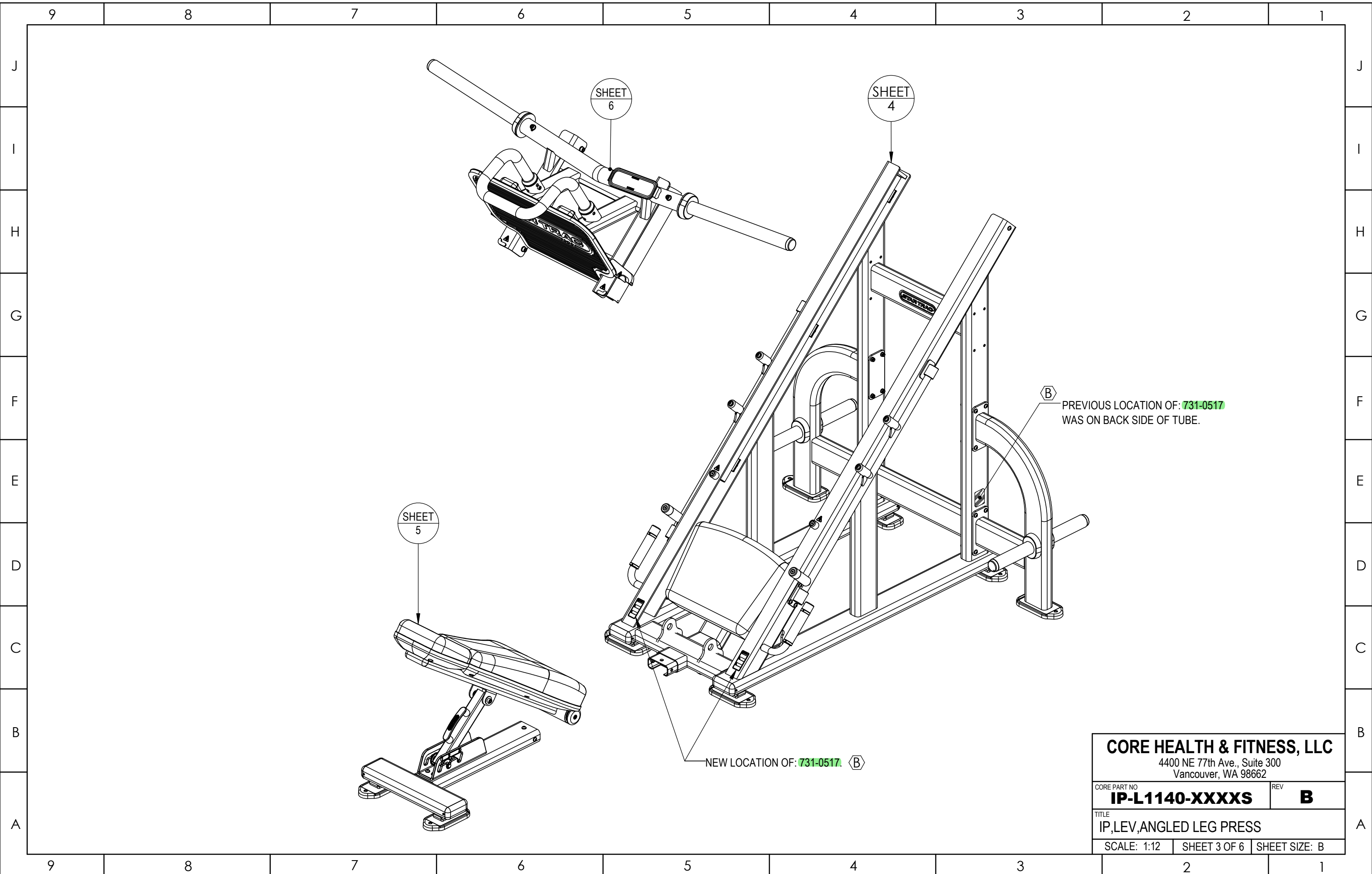
9		8		7		6		5		4		3		2		1	
	ITEM NO.	PART NUMBER	DESCRIPTION	QTY.		ITEM NO.	PART NUMBER	DESCRIPTION	QTY.								
J	1	050-2125-10	STICKER,SERIAL NUMBER,BENCHES	1		46	731-2647	FOOT, LONG, LEVERAGE	8								J
	2	731-0022-00XX	ASSY, UPHOLSTERY, HEAD REST	1		47	731-2648-00XX	ASSY, BACK REST, STD, ONE COLOR	1								I
	3	731-0033	NUT, RIVET, M8 X 1.25	6		48	731-3541	CLIP, BELT CLAMP PIN	2								I
	4	731-0058	BASE, HANDLE GRIP, ARMS	2		49	731-4163	GRIP, RUBBER, ILR	2								H
I	5	731-0120	SCREW, M8 X 1.25, 20MM, FHM, HK	2		50	731-4323-XX	WELDMENT, LEG PRESS, LEFT FRAME	1								H
	6	731-0137	BEARING, 52 OD, 25 ID, X 15MM	2		51	731-4338-XX	WELDMENT, LEG PRESS, SEAT BASE	1								G
	7	731-0195	ASSY, HANDLE ADJ, STARTRAC	1		52	731-4345-XX	WELDMENT, LEG PRESS, SEAT BACK	1								G
	8	731-0209	CAP, END, 110 X 50	7		53	731-4347-XX	PLATE, LEG PRESS, STOP	2								F
	9	731-0225	SCREW, M3.5 X 9.5, SELF TAPPING	12		54	731-4348	BAR, LEG PRESS, LINEAR ROD	2								F
H	10	731-0235	SCREW, M8 X 1.25, 75MM, BHC, HK	16		55	731-4349-XX	WELDMENT, LEG PRESS, SLED	1								E
	11	731-0335	STICKER, MADE IN CHINA, IP	1		56	731-4357	WELDMENT, LEG PRESS, BEARING TUBE	2								E
	12	731-0350	Screw, M10X1.5, 25mm, SHC, HK	8		57	731-4360	WELDMENT, FOOT PAD	1								D
	13	731-0352	SCREW, M6X0.8, 10MM, BHC, HK	4		58	731-4363	RUBBER, LEG PRESS, FOOT PAD	1								D
	14	731-0355	WASHER, PLAIN, M8, NARROW	77		59	731-4368-XX	WELDMENT, LEG PRESS, LOWER PIVOT	2								C
G	15	731-0359	SCREW, M8 X 1.25, 25mm, BHC, HK	27		60	731-4371	GRIP, LEG PRESS, SHORT	2								C
	16	731-0360	WASHER, PLAIN, M8, LARGE, GRADE A	8		61	731-4372	BAR, MACHINED, LEG PRESS SEAT SHAFT	1								B
	17	731-0363	NUT, M10X1.5, NYLOC	3		62	731-4373-XX	WELDMENT, LEG PRESS, STOP BAR, LHS	1								B
	18	731-0365	NUT, M8 X 1.25, NYLOC JAM	28		63	731-4381	WELDMENT, LEG PRESS, WEIGHT STORAGE	2								A
	19	731-0367	WASHER, PLAIN, M10	8		64	731-4384-XX	PLATE, MOUNT, WEIGHT STORAGE	2								A
F	20	731-0379	SCREW, M8 X 1.25, 20mm, SHC, HK	2		65	731-4473	END CAP	2								A
	21	731-0383	Cover, Head Rest	1		66	731-4475	BRACKET, ADJ HOOK, HYPER	1								A
	22	731-0390	SCREW, M8 X 1.25, 25mm, SHC, HK	20		67	731-4476	TUBE, PIVOT	1								A
	23	731-0397	SCREW, M8 X 1.25, 25mm, FHM, HK	4		68	731-4479-XX	WELD, ADJ, LEG PRESS	1								A
E	24	731-0411	SCREW, M8 X 1.25, 50MM, BHC, HK, CS	2		69	731-4777-XX	PLATE, MOUNT, WEIGHT ST., SMALL	4								A
	25	731-0512	STICKER, WARNING, PINCH	6		70	731-4778	WASHER, M10, FENDER, ZP	6								A
	26	731-0513	STICKER, STAR TRAC, DECO, 45MM X 191MM	1		71	731-4779	SCREW, M10X1.5, 90MM, SHC, HK, ZP	1								A
	27	731-0517	STICKER, WARNING, BOLT DOWN	2		72	731-4880	PLACARD, ANG. LEG PRESS, LEVERAGE	1								A
	28	731-0550-01	COVER, SEAT BACK, STD., LEFT	1		73	731-4892	STICKER, ROM, L1140	1								A
D	29	731-0550-02	COVER, SEAT BACK, STD, RIGHT	1		74	731-5016-XX	WELDMENT, LEG PRESS, STOP BAR, RHS	1								A
	30	731-0561	WASHER, M8, 1MM THK	10		75	731-5017	PIN, STOP BAR LIMIT	2								A
	31	731-1020	PLASTIC, SEAT BOTTOM, LEG MACHINE	1		76	731-5018	BUSHING, STOP BAR PIVOT, L1140	4								A
	32	731-1043	SCREW, M10X1.5, 75MM, SHC, HK, NP	2		77	731-5019	COVER, SLOTTED, L1140	4								A
	33	731-1226-00XX	ASSY, SEAT BOTTOM, SLP	1		78	731-5021	WELD, GRAB HANDLE	1								A
C	34	731-1265	CAP, END, 65MM, NO GROOVE	2		79	731-5029	PLATE, COVER, FOOT PAD	1								A
	35	731-1373	BUMPER, STOP, WGT	6		80	731-5167	STOP COVER, LEVERAGE	2								A
	36	731-1450	SCREW, M8 X 1.25, 75mm, SHC, HK, AS, ZP	4		81	731-5250	WELD, WGT HOLDER, 45LB	2								A
	37	731-1785	SCREW, SET, M4X.7, 4MM	8		82	731-5251-XX	PLATE, MOUNT, WGT HOLDER	2								A
	38	731-1834	BUSHING, M15 X 8, FLANGED	6		83	731-5272	CAP, PLUG, WEIGHT HORN, BLANK	6								A
B	39	731-1904	END CAP	2		84	731-5369	WELD, LEG PRESS, WT HORN, CHROME	2								A
	40	731-1917	TRIM RING, GRIP	4													A
	41	731-2073	CAP, TUBE, 44.5 X 76.2	2													A
	42	731-2076	SHAFT, ROLLING, ADJ, HYPER	1													A
	43	731-2077	BUSHING, ADJ ROLLER, HYPER	2													A
A	44	731-2434	BEARING, ROLLER 25MM, OPEN	4													A
	45	731-2500	STAND-OFF, ROD, SMITH	6													A



CORE HEALTH & FITNESS, LLC

4400 NE 77th Ave., Suite 300
Vancouver, WA 98662

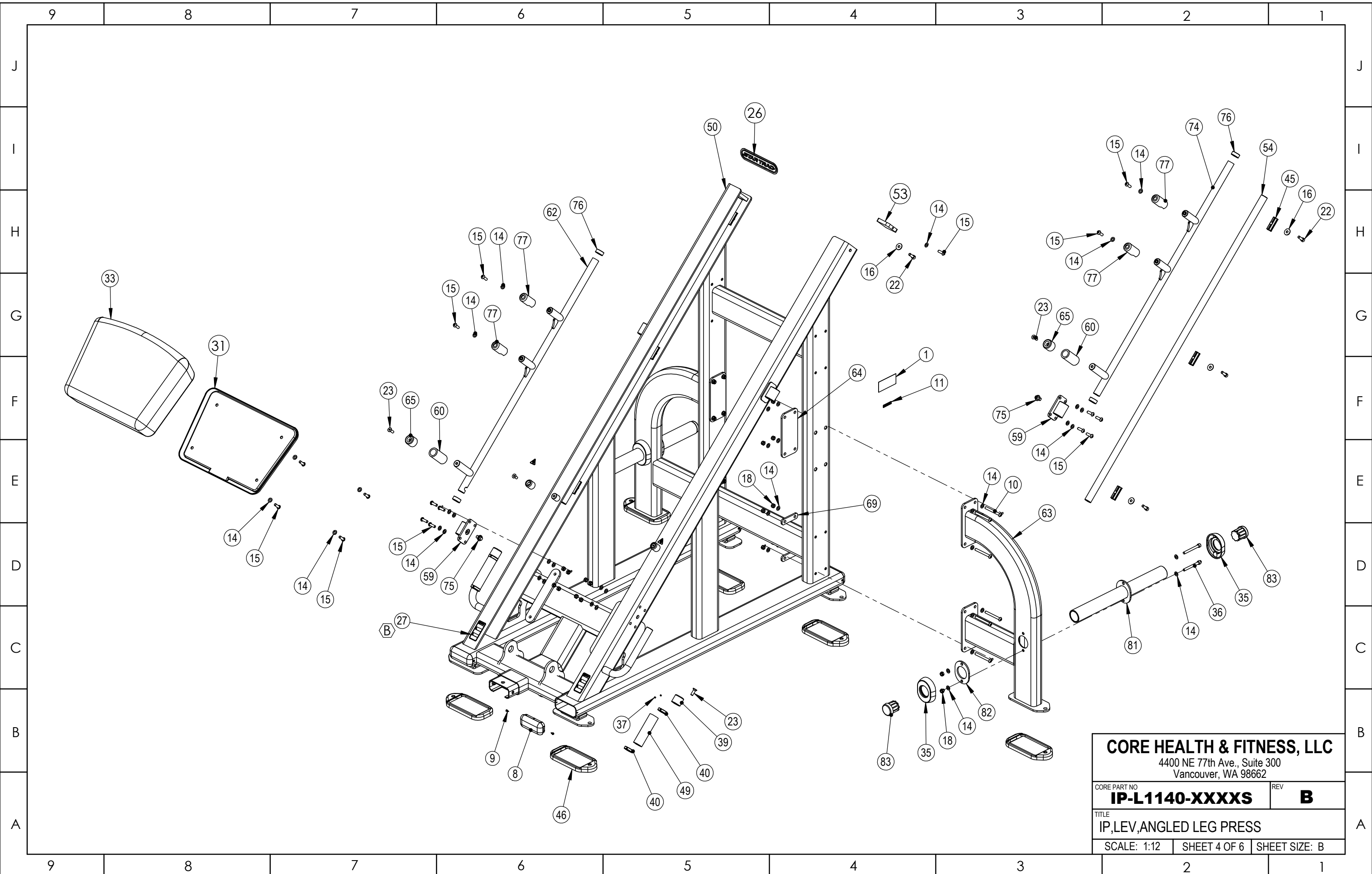
CORE PART NO	IP-L1140-XXXXS	REV	B
TITLE	IP, LEV, ANGLED LEG PRESS		
SCALE: 1:25	SHEET 2 OF 6	SHEET SIZE: B	



PREVIOUS LOCATION OF: 731-0517
WAS ON BACK SIDE OF TUBE.

NEW LOCATION OF: 731-0517

CORE HEALTH & FITNESS, LLC		
4400 NE 77th Ave., Suite 300 Vancouver, WA 98662		
CORE PART NO	REV	
IP-L1140-XXXXS	B	
TITLE IP,LEV,ANGLED LEG PRESS		
SCALE: 1:12	SHEET 3 OF 6	SHEET SIZE: B

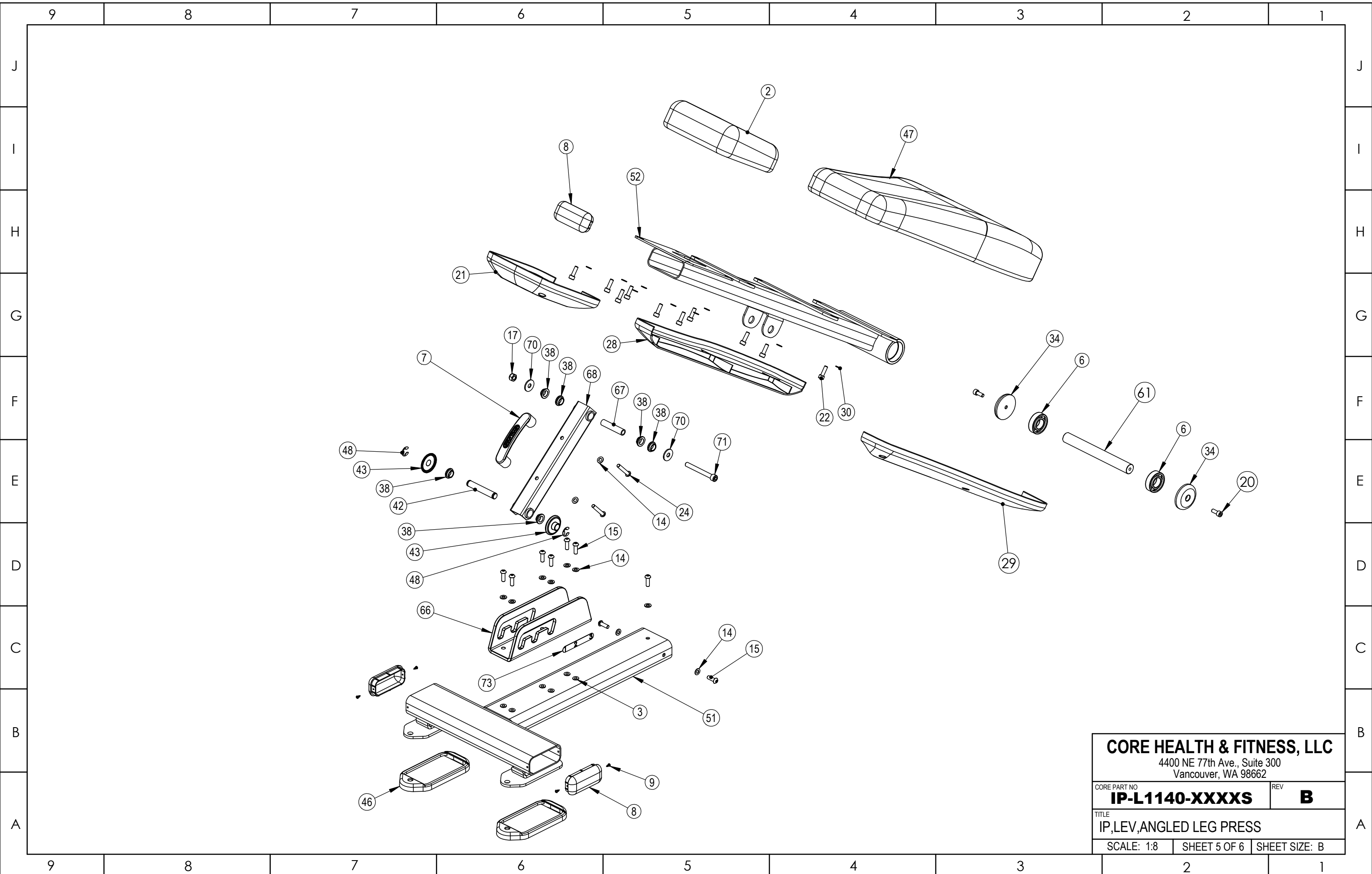


CORE HEALTH & FITNESS, LLC
 4400 NE 77th Ave., Suite 300
 Vancouver, WA 98662

CORE PART NO	REV
IP-L1140-XXXXS	B

TITLE
IP,LEV,ANGLED LEG PRESS

SCALE: 1:12	SHEET 4 OF 6	SHEET SIZE: B
-------------	--------------	---------------

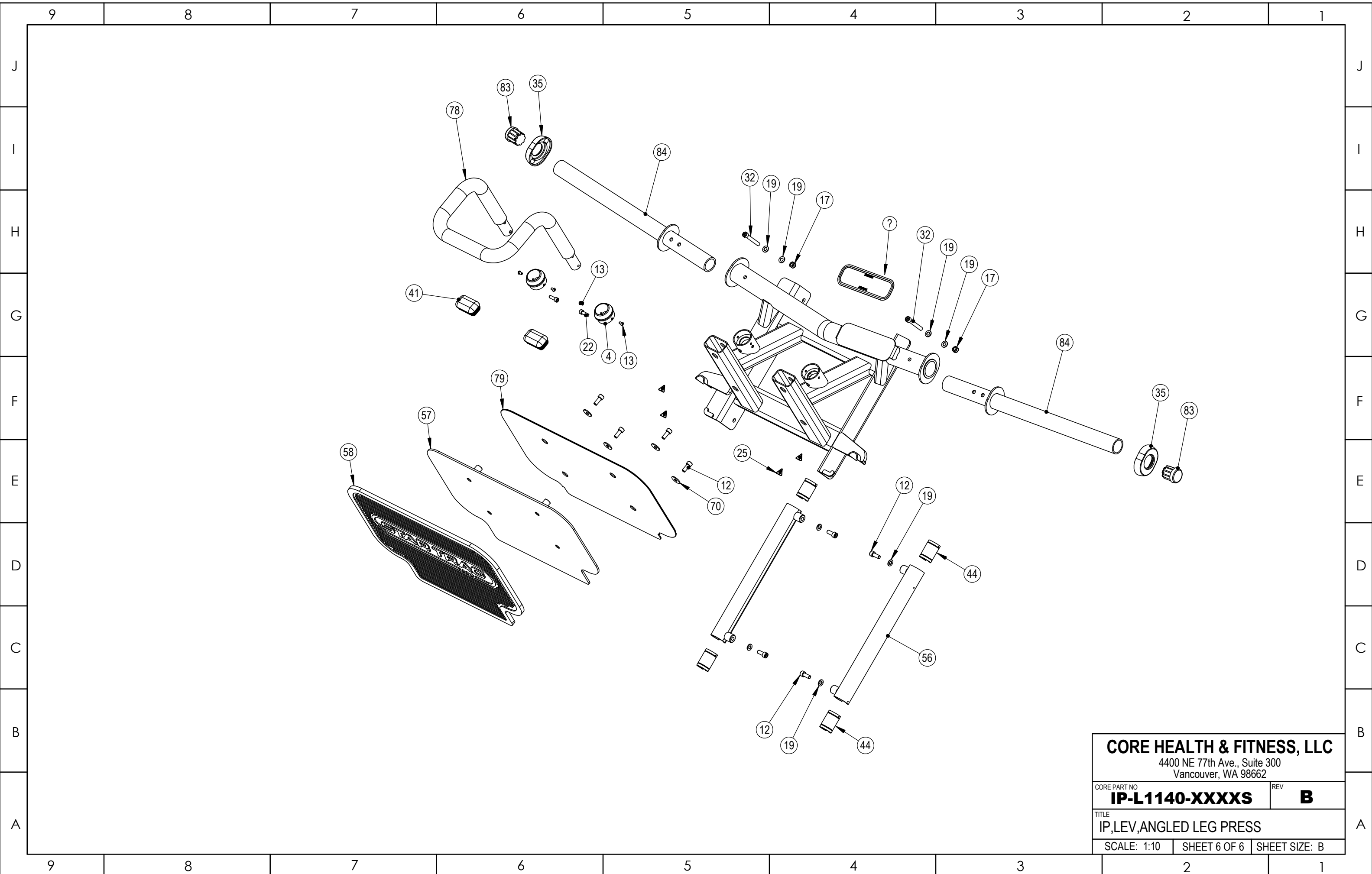


CORE HEALTH & FITNESS, LLC
 4400 NE 77th Ave., Suite 300
 Vancouver, WA 98662

CORE PART NO
IP-L1140-XXXXS REV **B**

TITLE
IP,LEV,ANGLED LEG PRESS

SCALE: 1:8 SHEET 5 OF 6 SHEET SIZE: B



CORE HEALTH & FITNESS, LLC
 4400 NE 77th Ave., Suite 300
 Vancouver, WA 98662

CORE PART NO	REV
IP-L1140-XXXXS	B

TITLE
IP,LEV,ANGLED LEG PRESS

SCALE: 1:10	SHEET 6 OF 6	SHEET SIZE: B
-------------	--------------	---------------